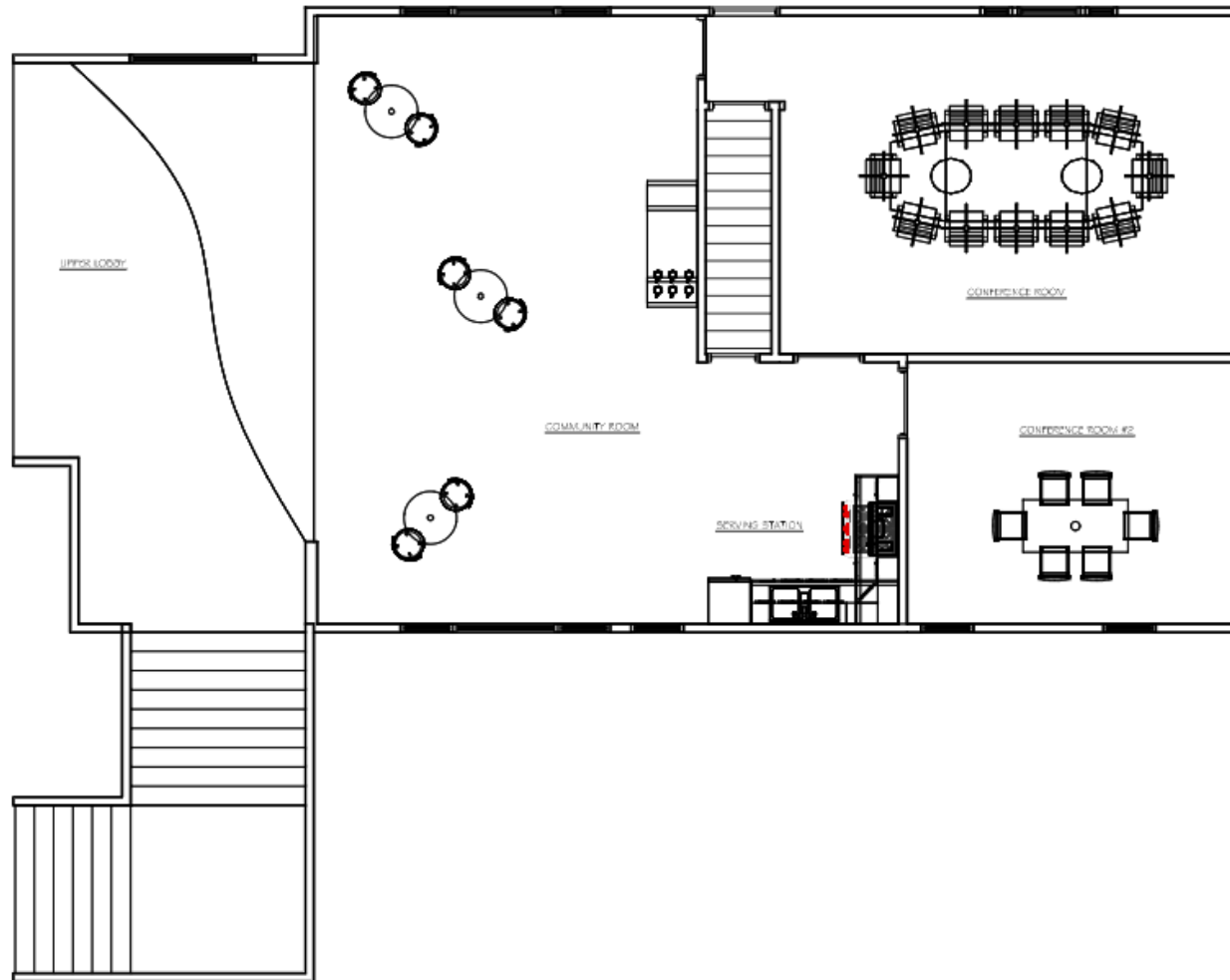


# Upper Lobby Remodel – Floor Plan



# Upper Lobby Remodel – Top View



# Upper Lobby Remodel – Top View



## **Wintonbury Vision**

We want to see our communities transformed by God's presence.

## **Wintonbury Mission**

We seek to help individuals and communities experience God, become more like Jesus, discover their calling, and impact their world.

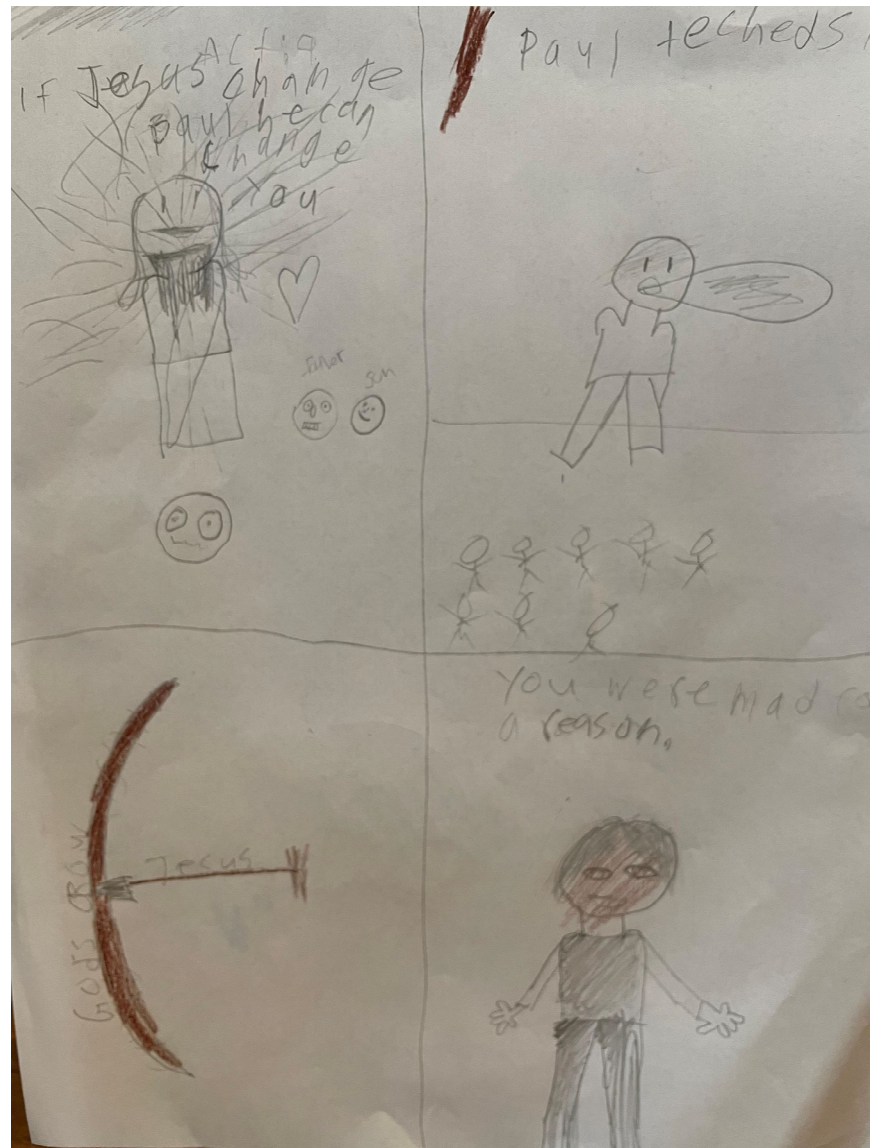


## Wintonbury Values

1. Authority: Jesus and The Bible
2. Atmosphere: Hospitality and Authenticity
3. Attitude: Freedom and Beloved
4. Allegiance: Reverence and Discipleship
5. Alignment: Life Together and Unity
6. Assignment: Empowerment and Mission



# Assignment





# Wintonbury Values



## **Wintonbury Values: Ambition**

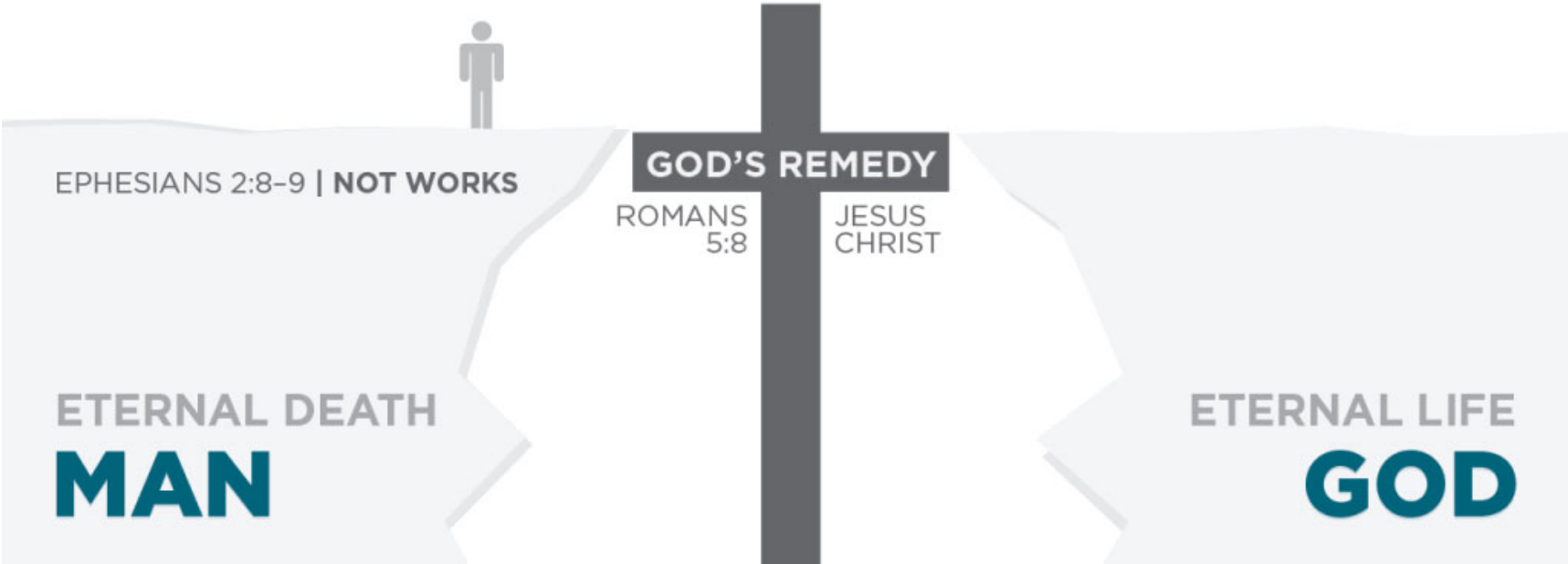
**13. Whole Gospel:** We proclaim a holistic gospel that provides healing for humanity and renewal for all of creation. (Matthew 9:35-38; Colossians 1:19-20; Romans 8:19-21)

**14. Whole World:** We send and support people who share the good news of Jesus with people around the globe. (Romans 15:30)





# GOD'S REMEDY



**Whole Gospel: Salvation is Shalom Blessing in OT**  
**Genesis 12:2-3** “I will make you into a great nation, and I will bless you; I will make your name great, and you will be a blessing. I will bless those who bless you, and whoever curses you I will curse; and all peoples on earth will be blessed through you.”

## **Whole Gospel: Salvation is Shalom Blessing in OT**

**Genesis 12:2-3** “I will make you into a great nation, and I will bless you; I will make your name great, and you will be a blessing. I will bless those who bless you, and whoever curses you I will curse; and all peoples on earth will be blessed through you.”

**Isaiah 61:1** “The Spirit of the Sovereign Lord is on me, because the Lord has anointed me to proclaim good news to the poor. He has sent me to bind up the brokenhearted, to proclaim freedom for the captives and release from darkness for the prisoners...”

# Whole Gospel: Jesus is the “Shalom-Bringer”

Mark 1:15 “The time has come,” he said. “The kingdom of God has come near. Repent and believe the good news!”



## **Whole Gospel: Redemption Includes EVERYTHING**

**Romans 8:20-21** “For the creation was subjected to frustration, not by its own choice, but by the will of the one who subjected it, in hope that the creation itself will be liberated from its bondage to decay and brought into the freedom and glory of the children of God.”

**Colossians 1:19-20** “For God was pleased to have all his fullness dwell in him, and through him to reconcile to himself all things, whether things on earth or things in heaven, by making peace through his blood, shed on the cross.”

# Foretastes of the Kingdom of God





# New Hope Refugee Ministries

---

Helping Refugees in Serpong, Indonesia



David & Bee Paul | Dec 5 2021.

# WHERE ON EARTH IS INDONESIA?





## **NEW HOPE REFUGEE MINISTRIES (NHRM)**

**NHRM's mission  
is to help  
refugees living in  
Indonesia by  
offering them  
physical,  
emotional,  
financial, and  
spiritual support  
in times of need.**



- NHRM ([www.newhoperefugeeministries.com](http://www.newhoperefugeeministries.com)) is a Christian relief agency working with refugees in Indonesia under the umbrella of a registered non-profit foundation, Yayasan Cahaya Anak Bangsa (YCAB).
- How we began:  
<https://www.youtube.com/watch?v=GAAALohKi80&feature=youtu.be>
- Our vision:  
[https://www.youtube.com/watch?v=mOyoRMbNHhg&feature=emb\\_logo](https://www.youtube.com/watch?v=mOyoRMbNHhg&feature=emb_logo)



Changed Lives

---

## **The Call to Concurrent Missions: Acts 1:8**

“But you will receive power when the Holy Spirit comes on you; and you will be my witnesses in Jerusalem, and in all Judea and Samaria, and to the ends of the earth.”



## The Call to Concurrent Missions: Acts 1:8

- Jerusalem – Greater Hartford
- Judea – New England
- Samaria – Dominican Republic
- Ends of the Earth



## Wintonbury Missions and Outreach

- **Prayer** – Support and Admin
- **Care** – Compassion and Justice
- **Share** – Church Planting and Evangelism



# Wintonbury Missions Matrix

	Jerusalem (Hartford)	Judea (NE)	Samaria (DR)	Ends of the Earth	Total
Prayer	2	2	1	4	9
Care	5	0	2	3	10
Share	3	2	1	7	13
Total	10	4	4	14	32
	25%	12.5%	12.5%	50%	

## Wintonbury Missions & Outreach Goals

- Missions Chair: Fin Congdon
- “Everyone know a little about all and a lot about one”
- Budget Support: 20% of total budget
- Missionary Champions – each missionary/outreach
- Annual Missions Conference
- Annual Focus on Praying for Persecuted Christians
- Missionary Cards – pray for a missionary
- Tim Teams: On-site visits from Wintonbury
- Sharing Events when visiting Wintonbury



# Candace Fish

Church Mobilizer, U.S. Engagement Team

START. STRENGTHEN.  
SEND.

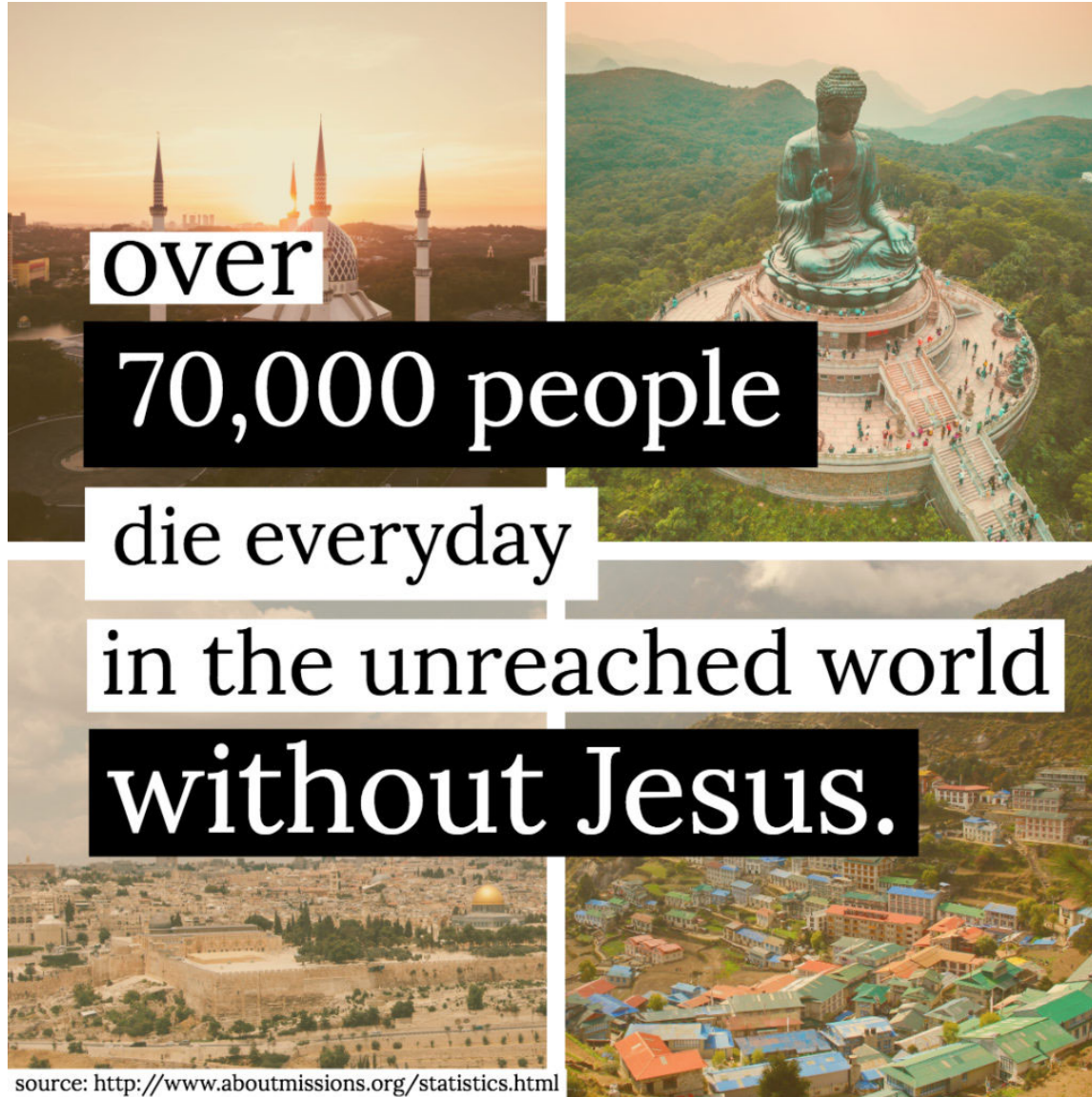


A composite image showing a street scene on the left and a narrow alleyway with a train track on the right. The street on the left has a dark car parked on the side. The alleyway on the right has a train track running through it, with buildings and a bicycle on the right side. The overall scene is somewhat dimly lit, suggesting an urban environment.

# REACH

ACROSS THE STREET & AROUND THE WORLD

Converge outreach and evangelism conference



over

70,000 people

die everyday

in the unreached world

without Jesus.

source: <http://www.aboutmissions.org/statistics.html>

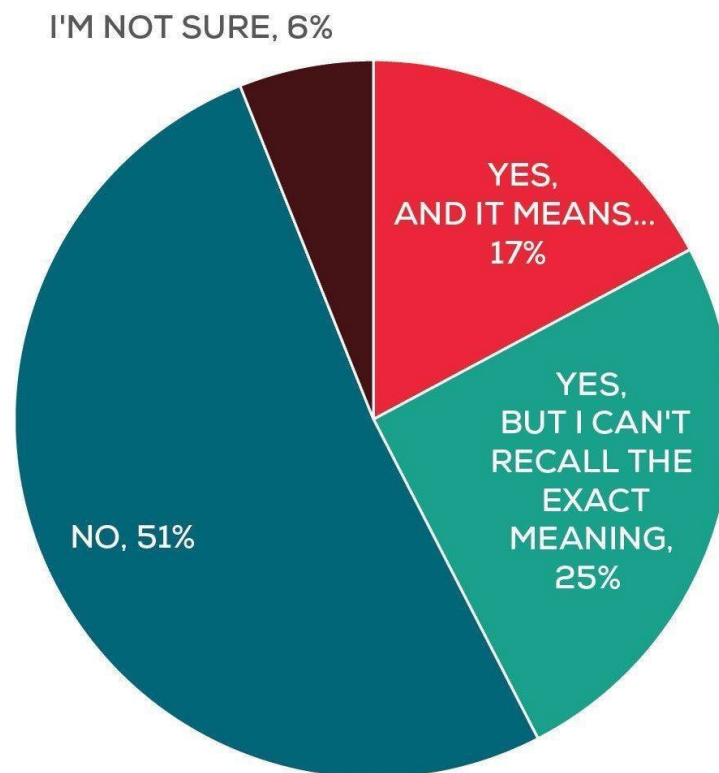


We are asking God for a  
**gospel movement among every  
least-reach people group—**  
in our generation.

# Scriptural Foundation The Great Commission

CHURCHGOERS: HAVE YOU HEARD OF  
THE GREAT COMMISSION?

Barna



October 2017, *n*=1,004 U.S. churchgoers.

© 2018 | barna.com

# U.S. Engagement Team

*Serving Churches. Reaching Nations.*

- **Coach**

*Coach churches through 2:10 FOCUS - a prayerful, discerned process to identify the congregations unique skills and resources, matching them to global ministry partnerships that will spur gospel movements among the least-reached.*

- **Connect (Consortia)**

*Connect the local churches to each other and their global partners through a Consortia, a network that can do more than one can do alone.*

- **Deaf Ministry**

*Help the local church strategically reach the least of the least-reached in their community.*



Thank you!

Candace Fish

[candacef@converge.org](mailto:candacef@converge.org)

[converge.org/missionary/candace-fish](https://converge.org/missionary/candace-fish)



# Rick and Myla Berry – Thailand Initiative

# Foretastes of the Kingdom of God

